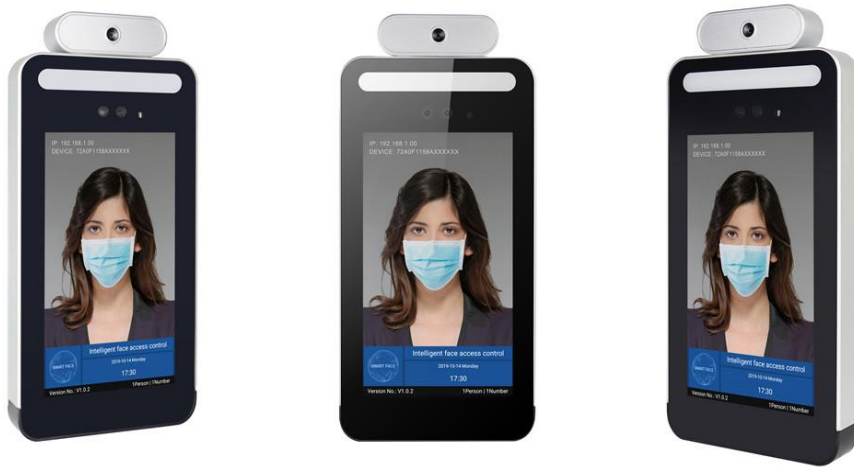




# WINSAFE Smart Thermometer WS-W1000



## Key Feature



### Infrared Camera

Accurate body temperature reading



### Control external hardware

Rich interface(Serial, Wiegand,Relay) to interface and control external hardware



### Expandable storage

Up to 128GB SD card(not included, must be installed before delivery) to keep important data such as photo history and body temperature



### Well connected

WIFI, Bluetooth, 4G connectivity(SIM card must be installed before delivery)



### Suitable for

Body temperature reading

Facial recognition

Door/Gate control

Access card control(NFC)

History record for people moveout

## Technical Specification

	Description	Specification
<b>Basic Specification</b>	OS system	Android 7.1
	Display screen	7-inch,16:9, WSVGA 1024 x 600 pixel
	Power supply	DC12V/2A(external power supply only)
	Operation temperature	-20°C - 60°C
	Sealing level	IP55
	Application	Indoor and outdoor
	Dimension	121mm(L) x 225mm(W) x 25mm(T)
<b>Hardware Configuration</b>	Identity mode	Face printing
		ID card(Optional external module required)
		Mifare card(Optional external module required)
	Face recognition parameters	Recognize time < 1s/person
		Accuracy ≥99%
		Facial recognition distance 0.3m - 2.0m
		Local face database capacity is 30,000
	Interface	Serial port x 1, RS232
		100Mbps Network card x 1
		Wiegand Extension Interface x1(Read and Write)
USB2.0 x1		
Relay x1		
<b>Wireless Connection</b>	Camera	2M pixels 1080P
	Infrared Camera	2M pixels 1080P
	4G LTE	4G LTE
	WIFI	2.4G 802.11b/g/n
	BT	BT4.0
	Temperature report range	35 - 42°C
<b>Body Temperature Detection</b>	Measuring accuracy	±0.5°C
	Measuring distance	< 0.5m
	Measuring speed	100ms - 500ms
	Over temperature alarm	37.3°

\*\*\* Product specification are subject to change without notice \*\*\*